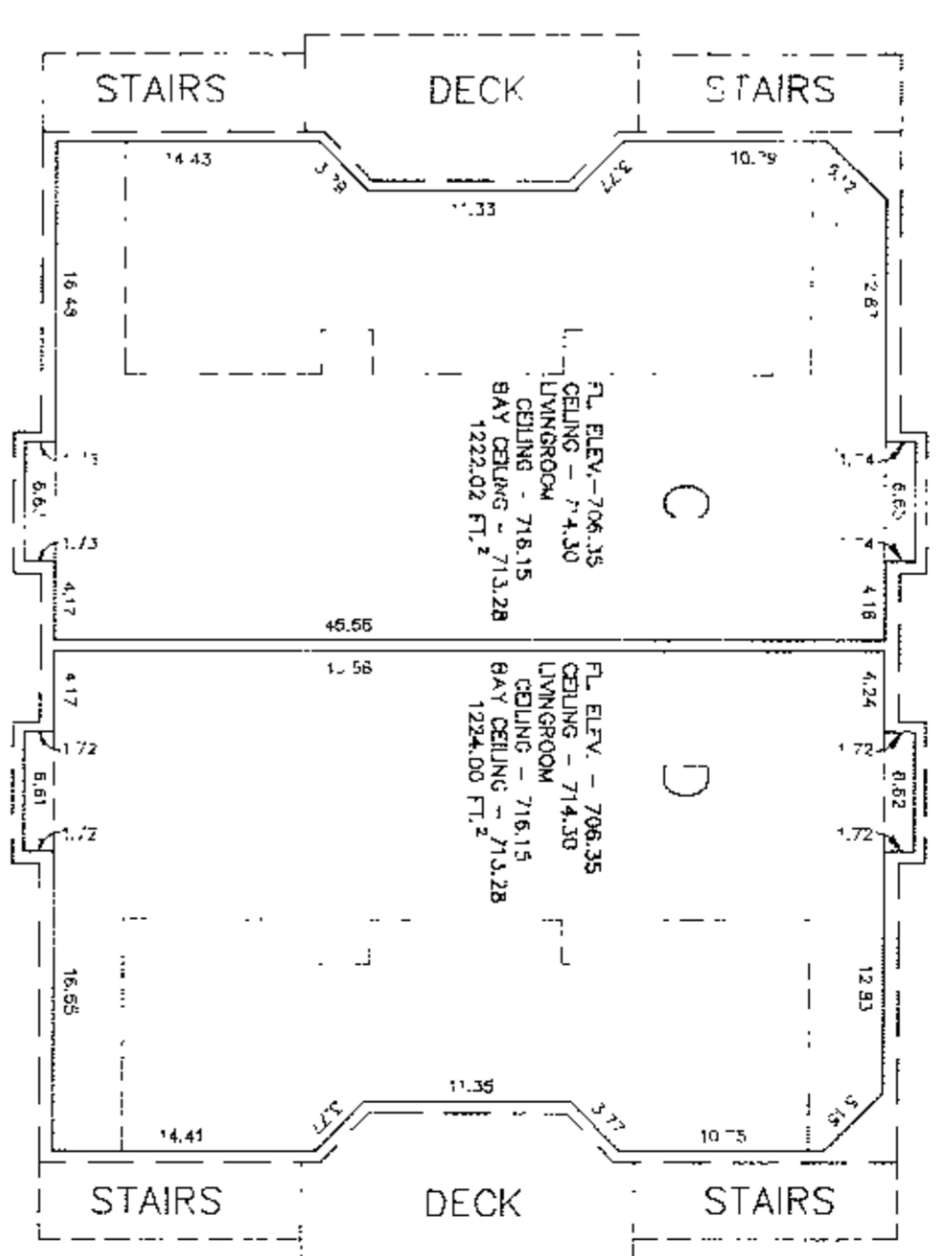
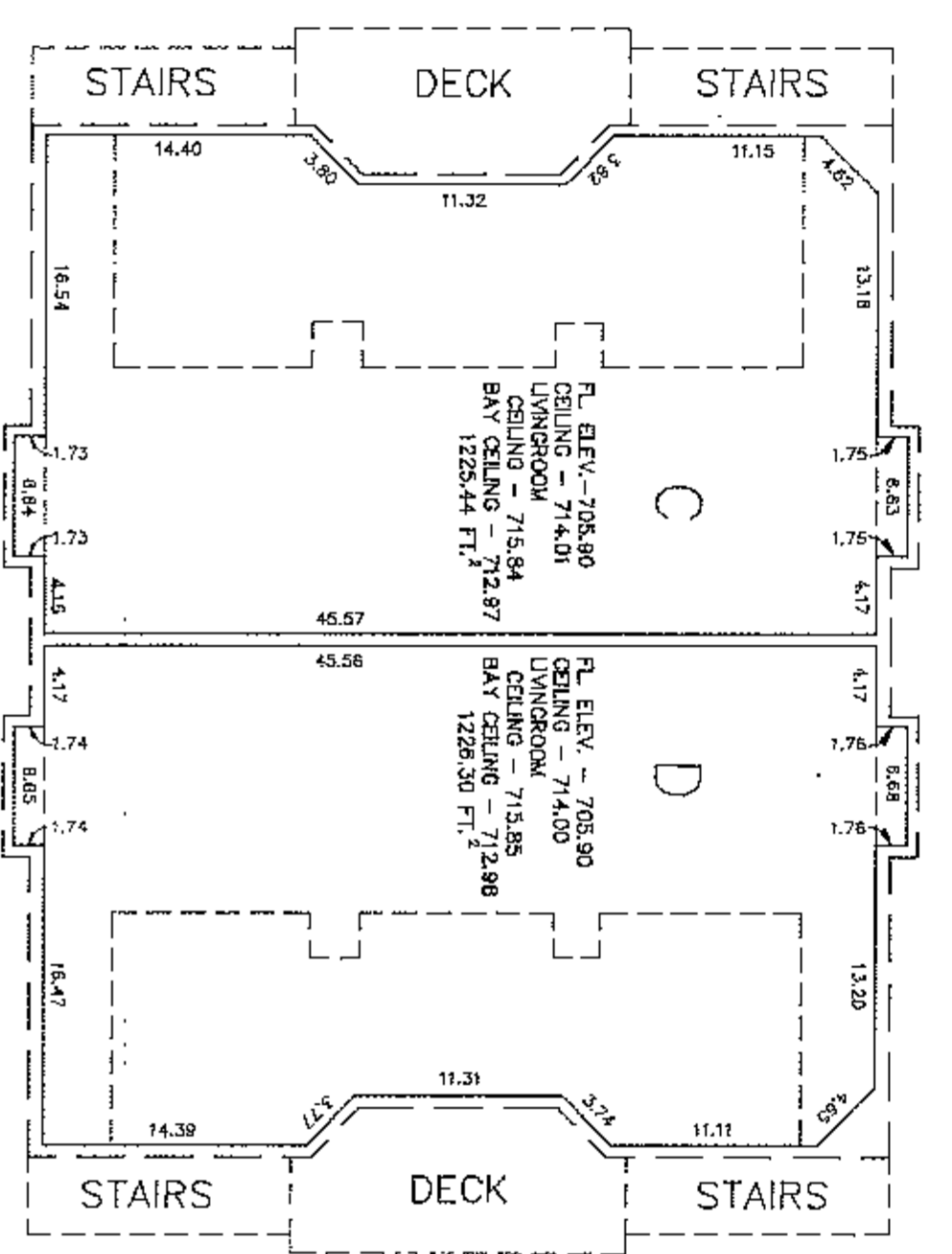
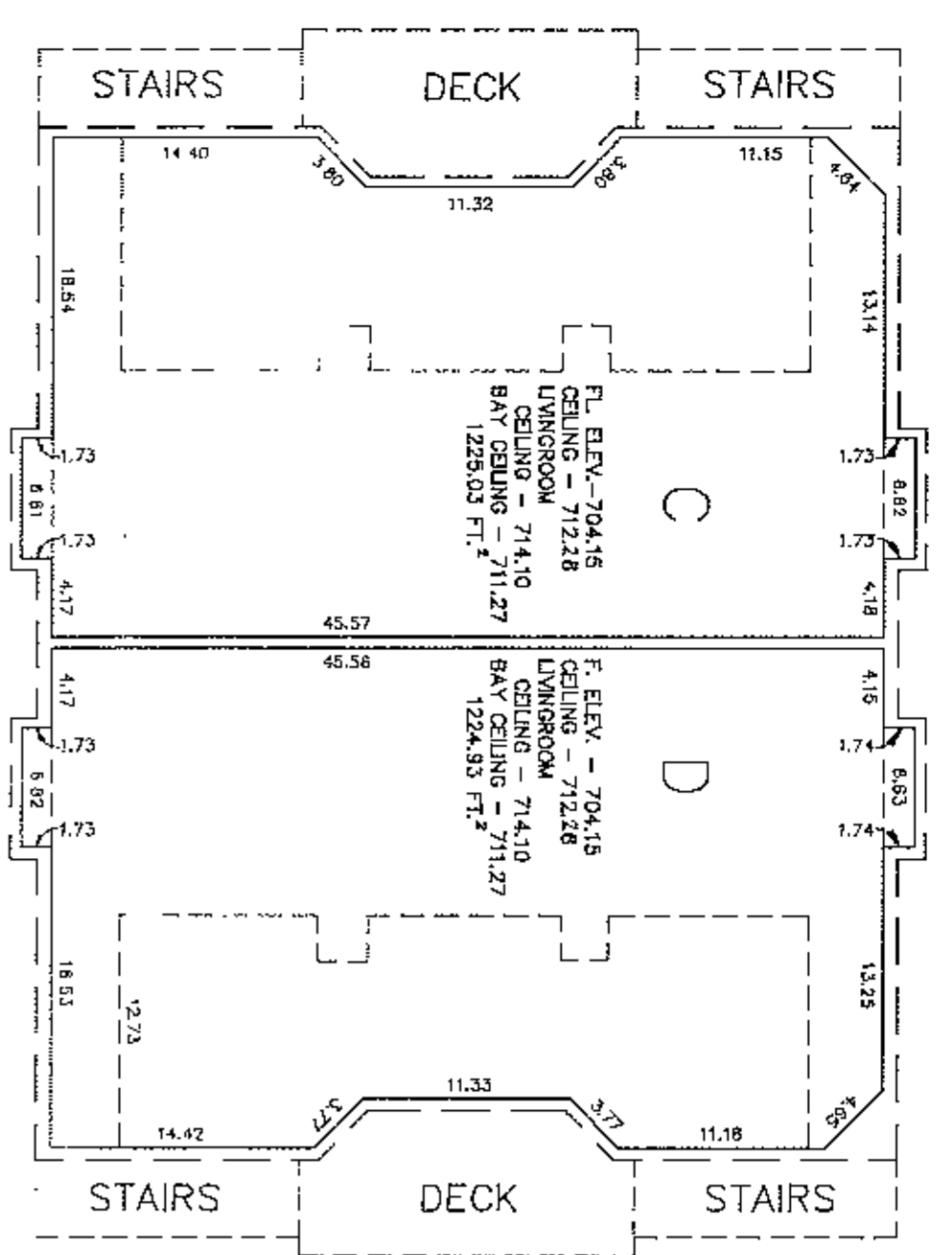




03/09/87  
 03/09/87  
 03/09/87

19357  
 10/28/87  
 10/28/87

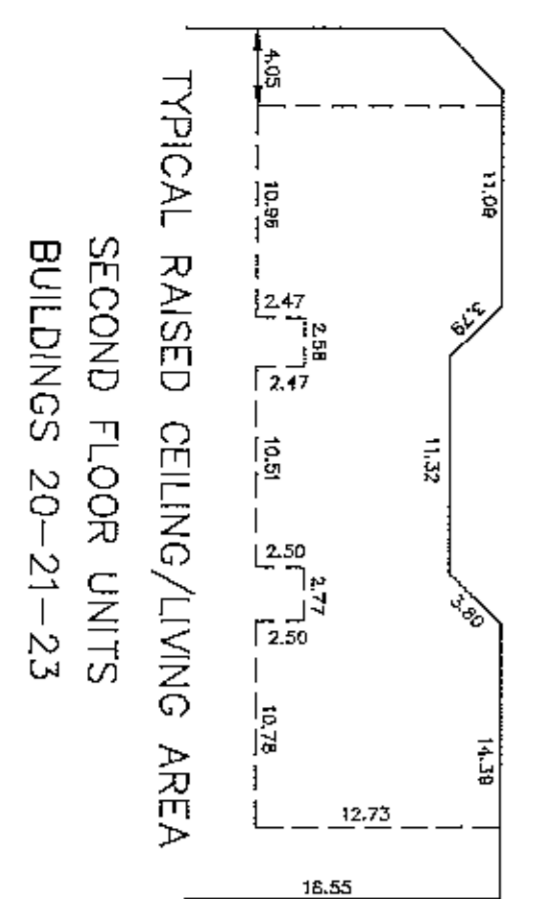
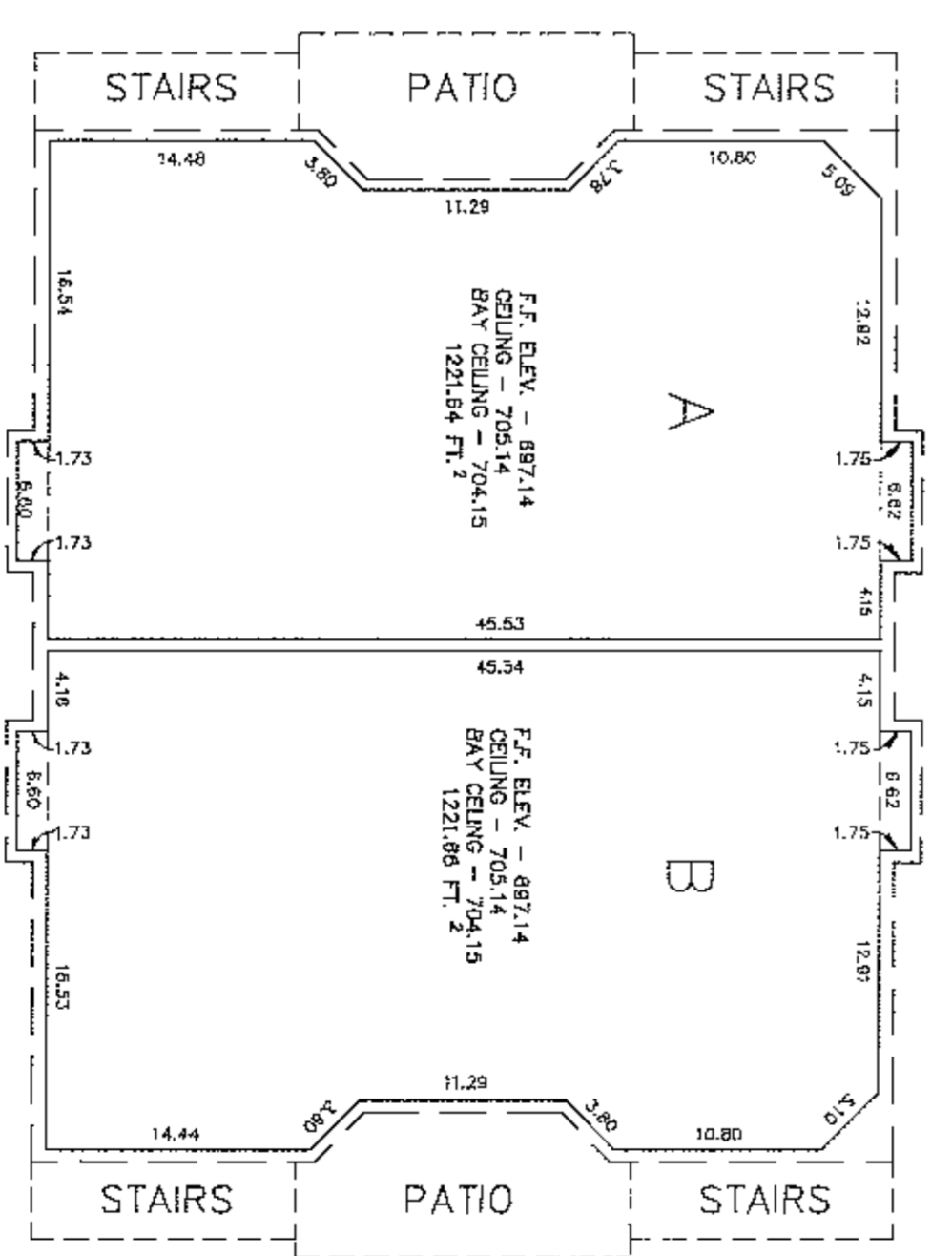
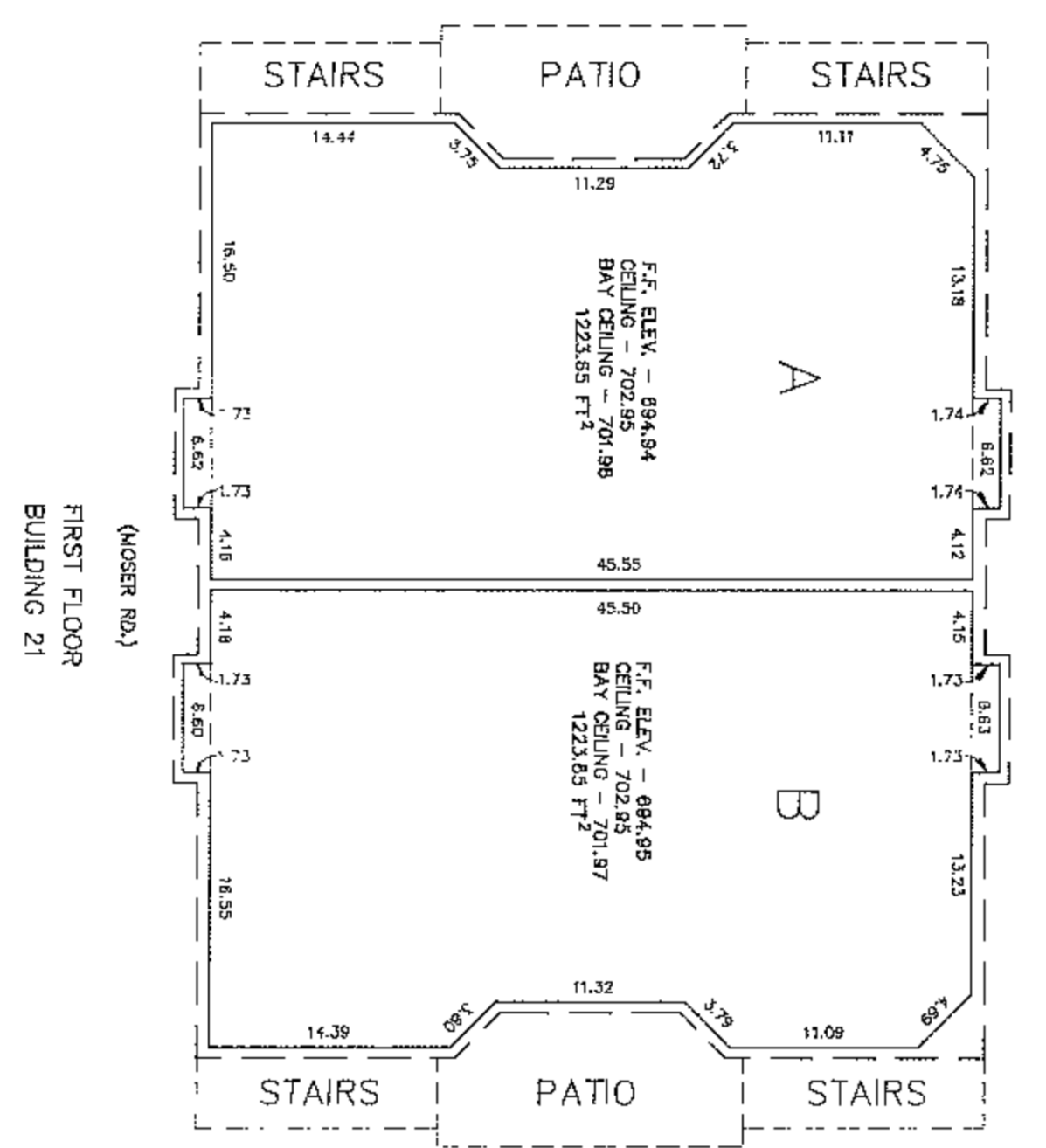
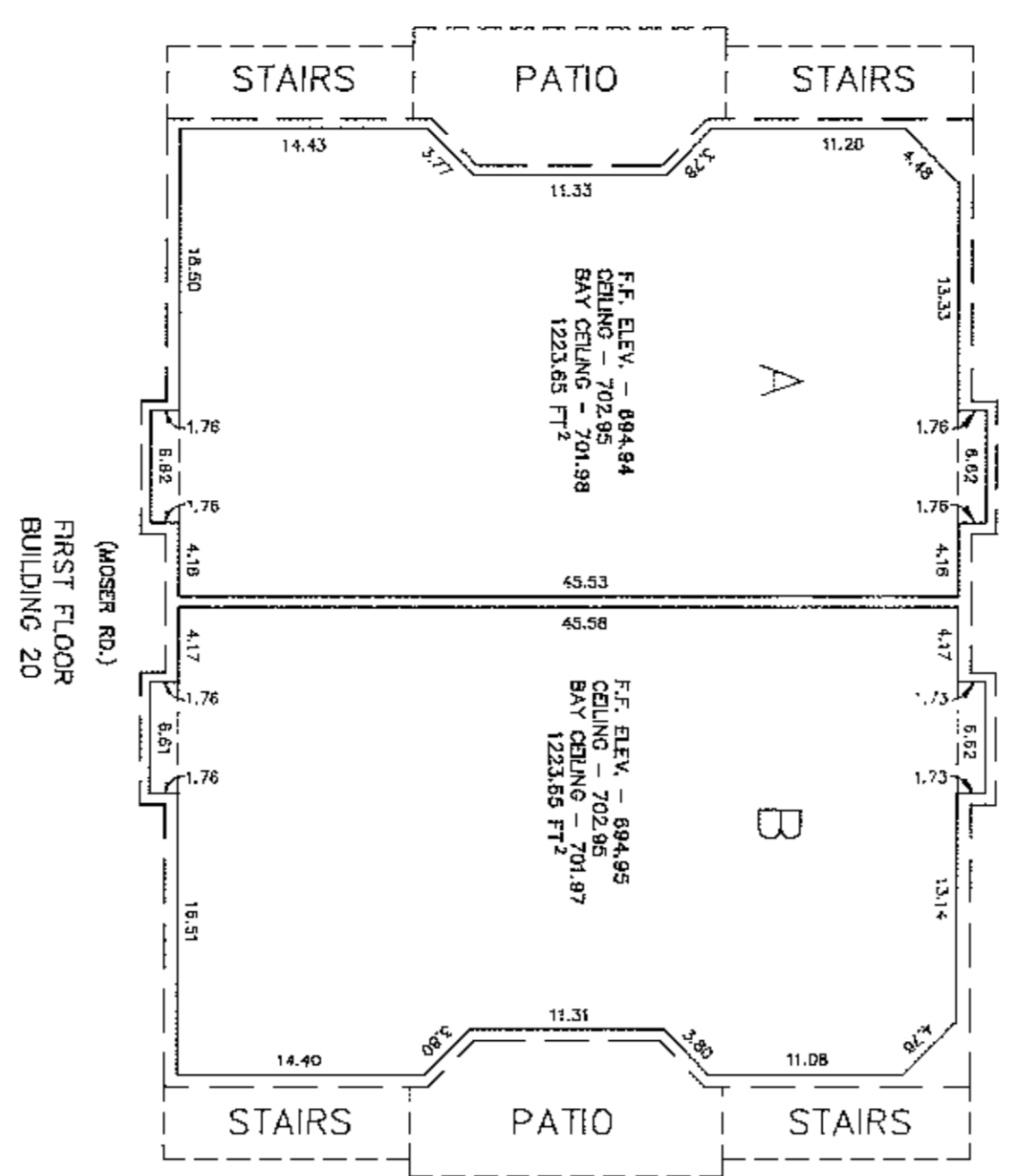


LEGEND

UNIT BOUNDARY

LIMITED COMMON ELEMENT

GENERAL COMMON ELEMENT



PROJECT NO.: 8720

REVISIONS:

EVANS/GRIFFIN, INC.  
 4898 Brownsboro Center  
 Louisville, Kentucky 40207  
 (502) 895-0682 (502) 895-0683

SCALE: 1" = 10'

DATE: 5/22/87

Sheet 2 of 5

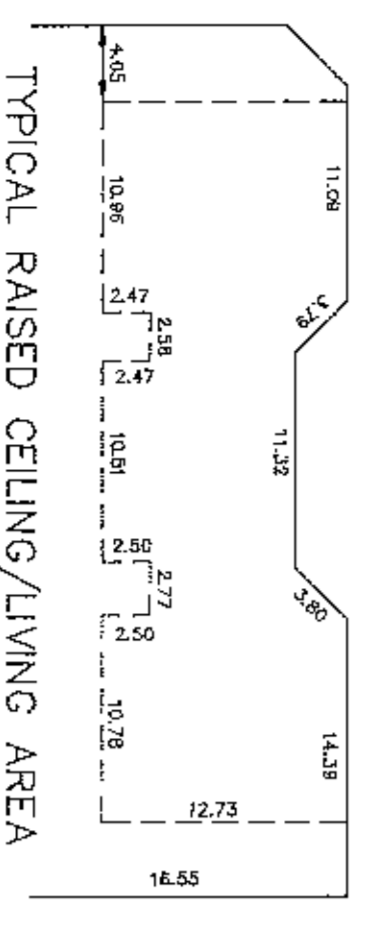
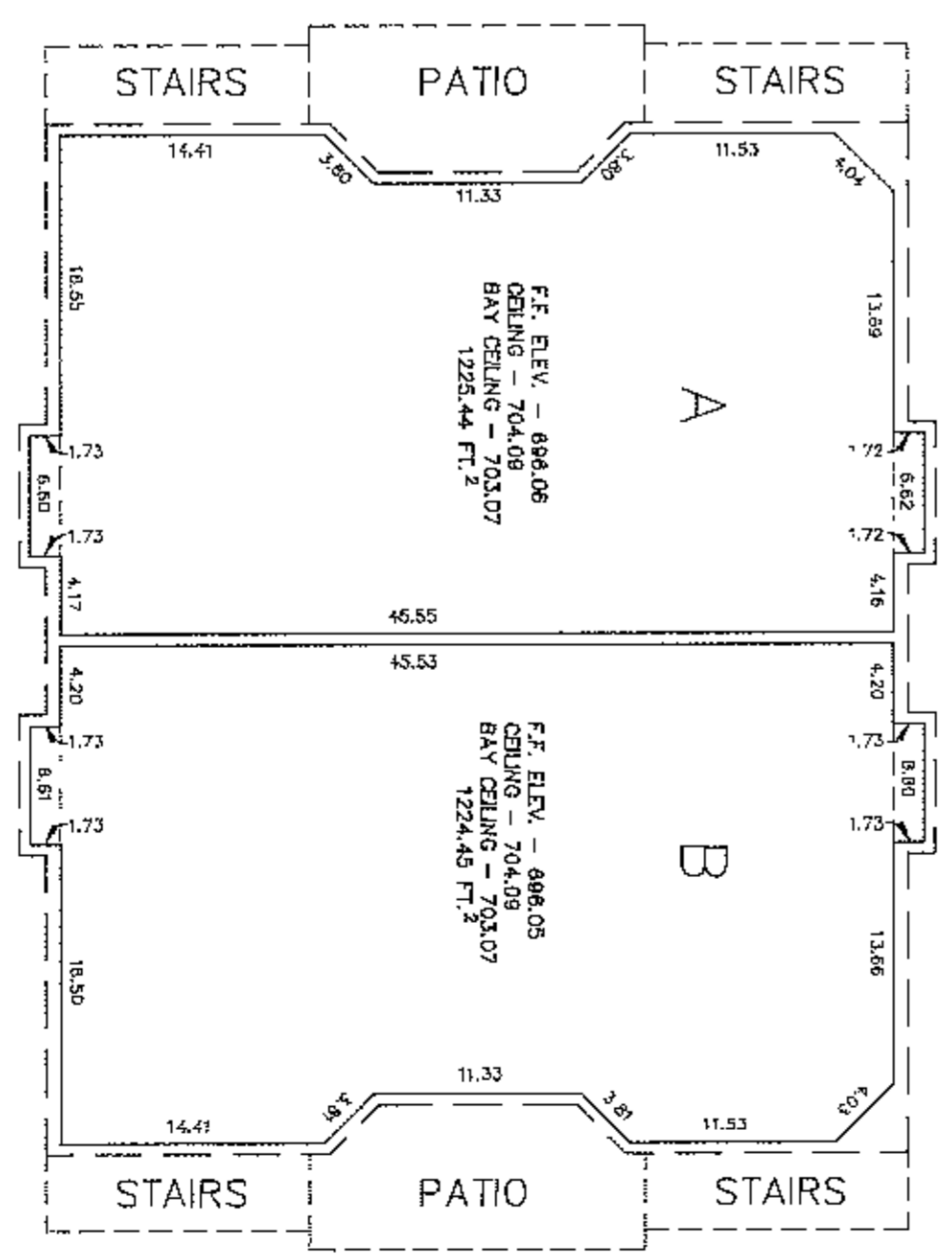
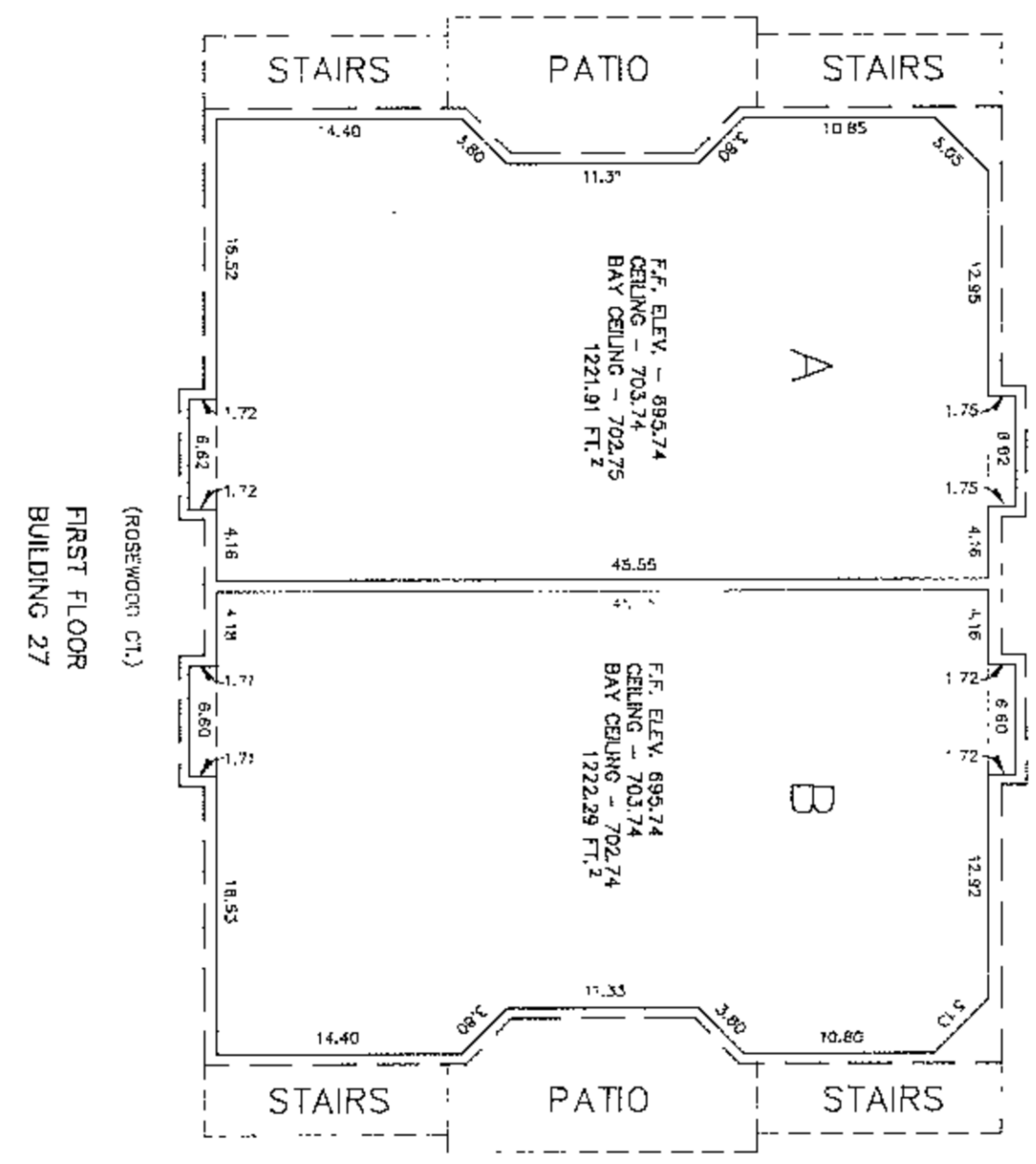
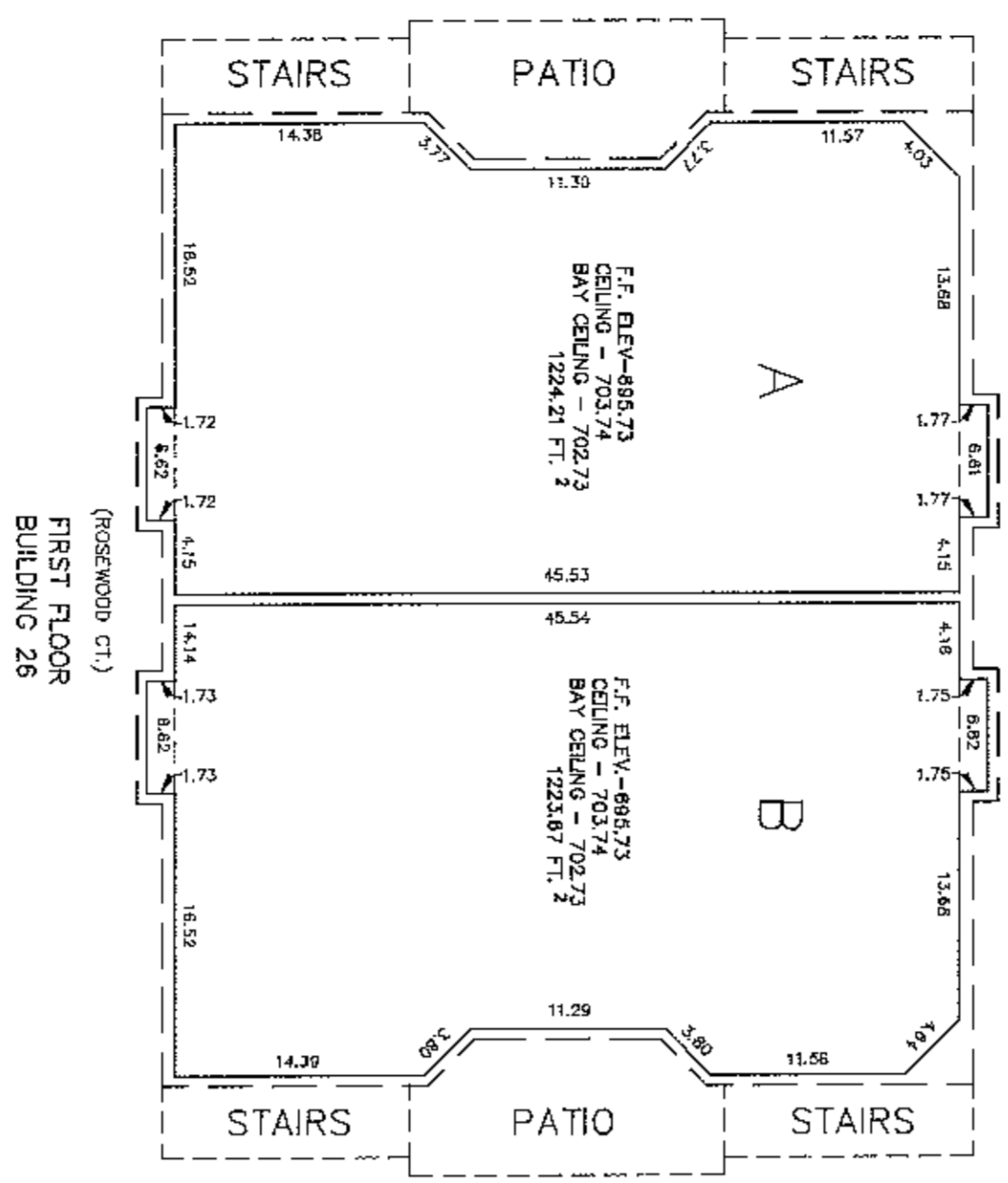
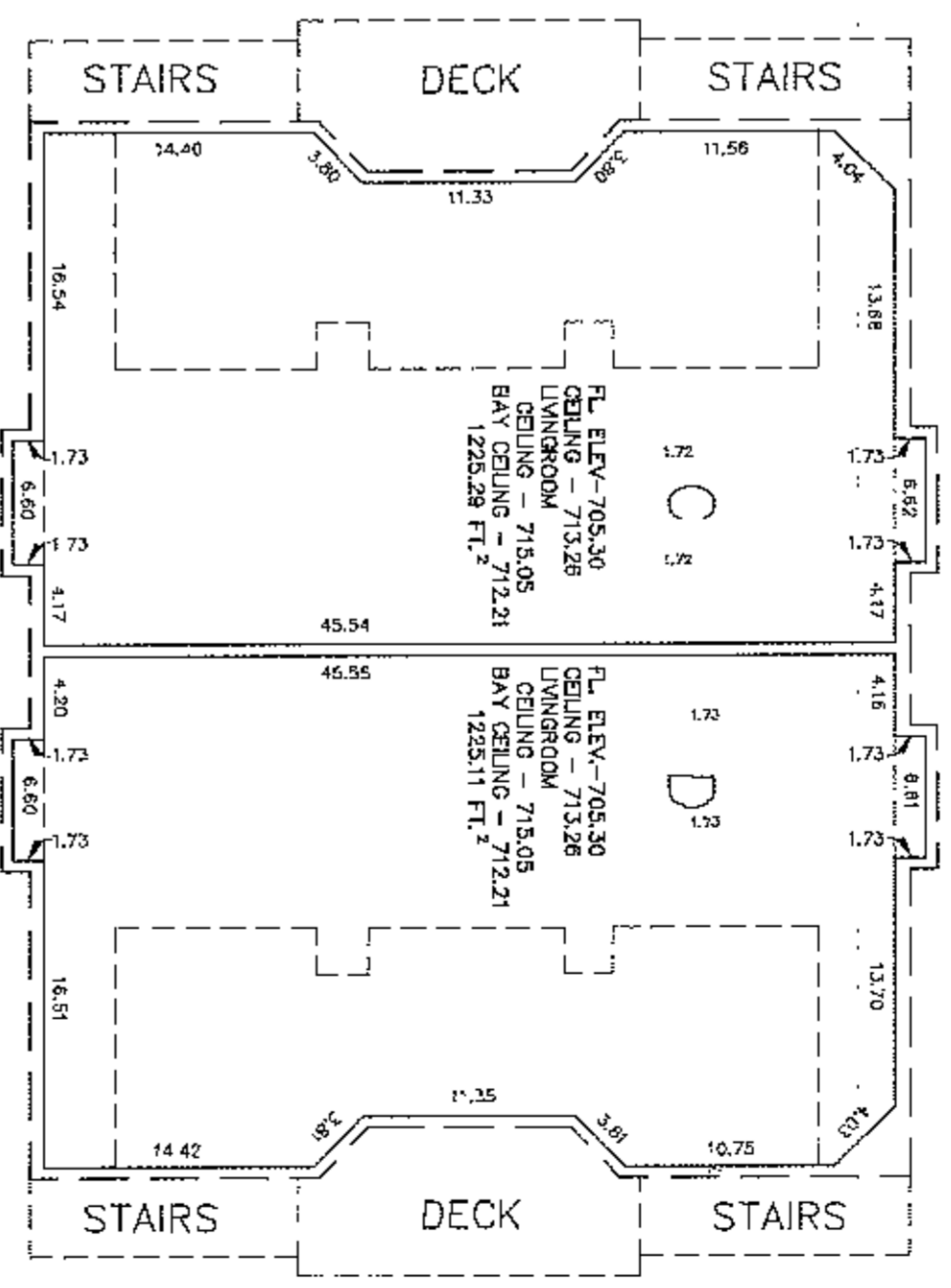
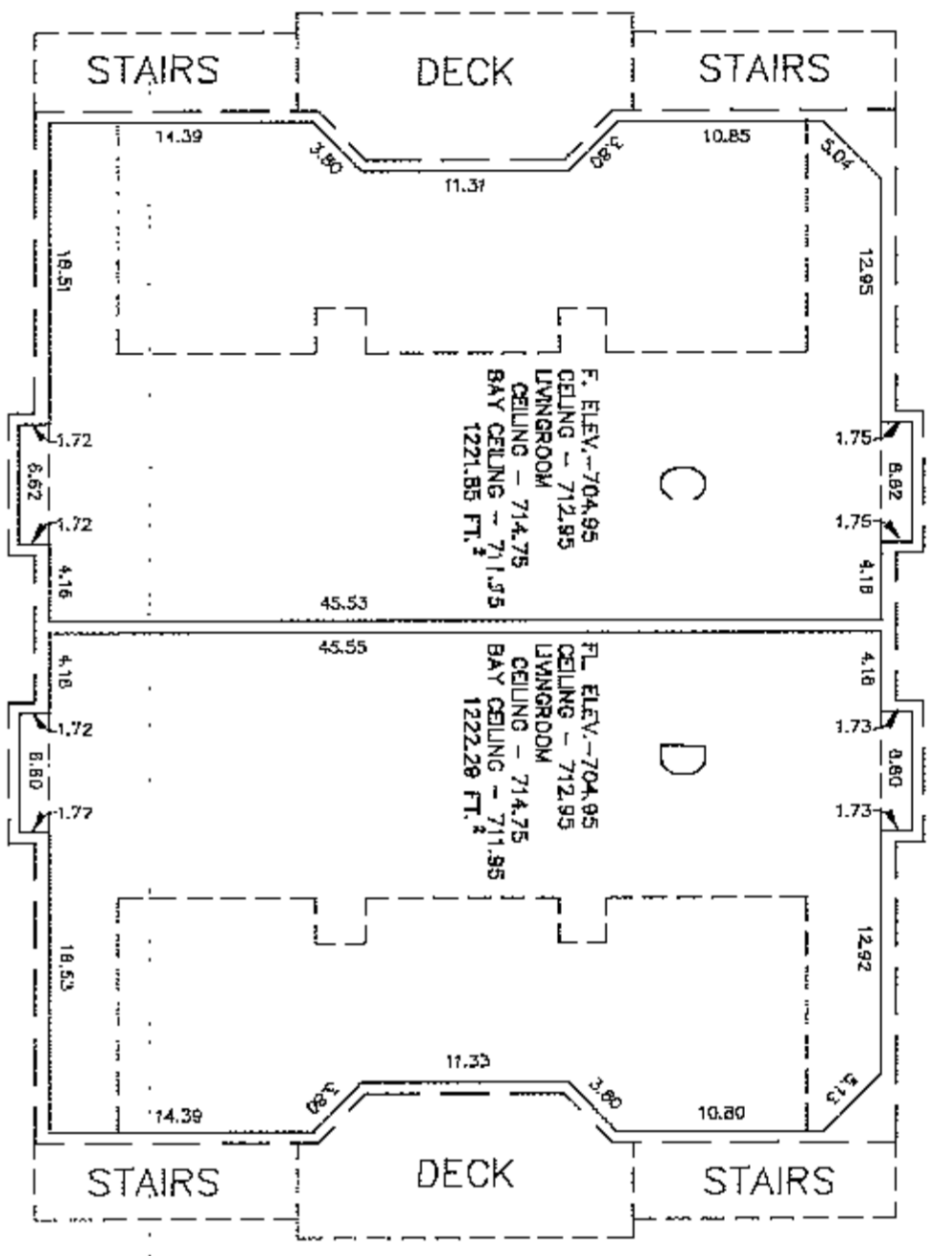
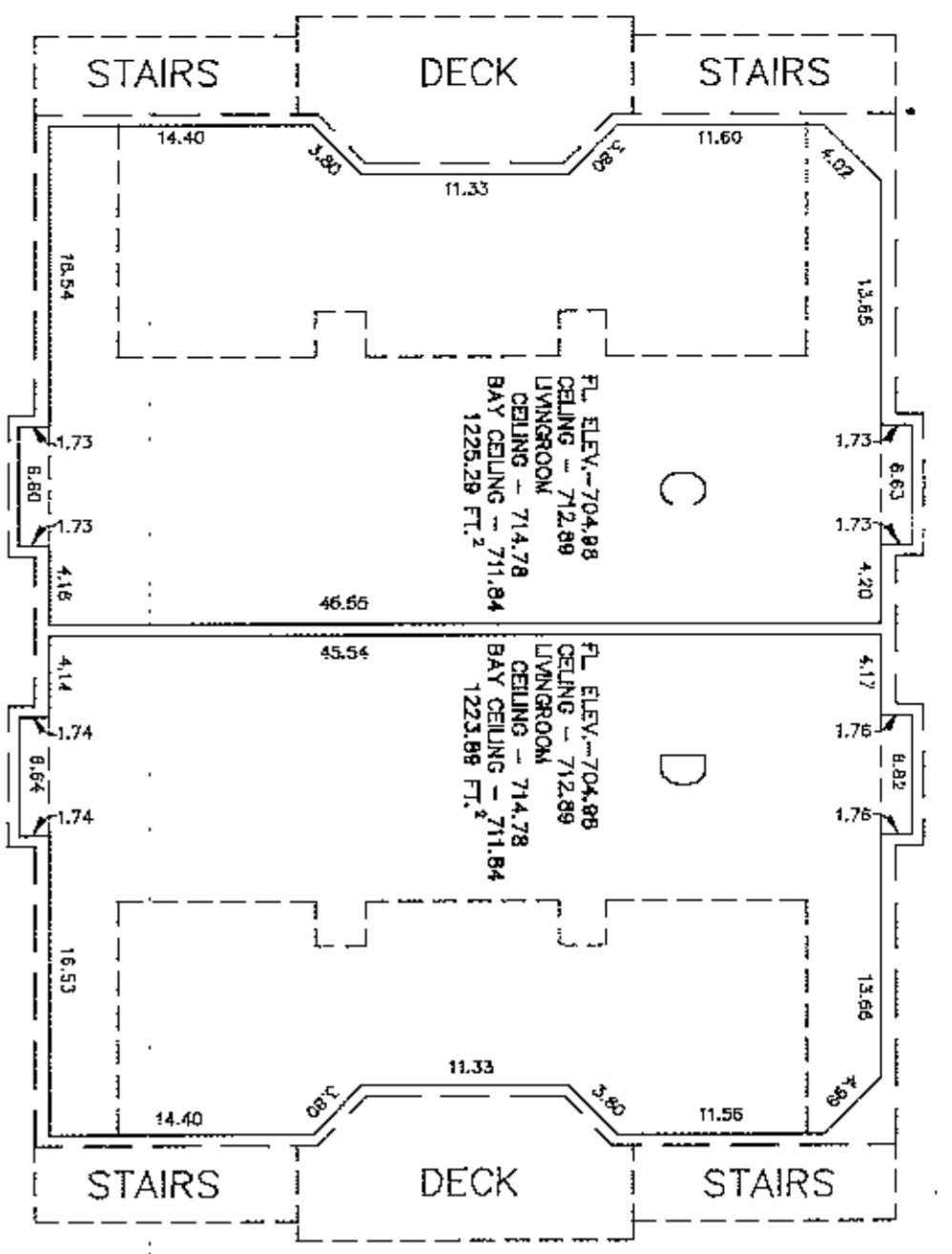
SHELBY POINTE  
 CONDOMINIUM  
 HOMES

40X13

13257  
18257

18 APR 14 AM 9:18  
18 APR 14 AM 9:18  
18 APR 14 AM 9:18

REVISED 4/18  
BY: JLLG  
DATE: 4/18/14

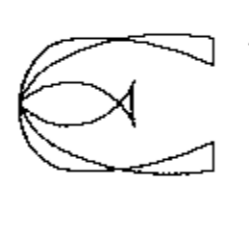


LEGEND  
UNIT BOUNDARY ELEMENT  
LIMITED COMMON ELEMENT  
GENERAL COMMON ELEMENT

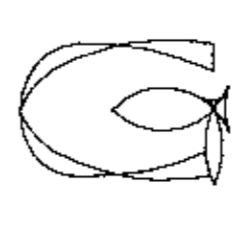
PROJECT NO.: 8720

REVISIONS:

DRWN BY: JLLG  
CHKD BY: JLLG



EVANS/GRIFFIN, INC.  
4898 Brownsboro Center  
Louisville, Kentucky 40207  
(502) 895-0682



(502) 895-0683

SHELBY POINTE  
CONDOMINIUM  
HOMES

SCALE: 1"=10'  
DATE: 5/22/87

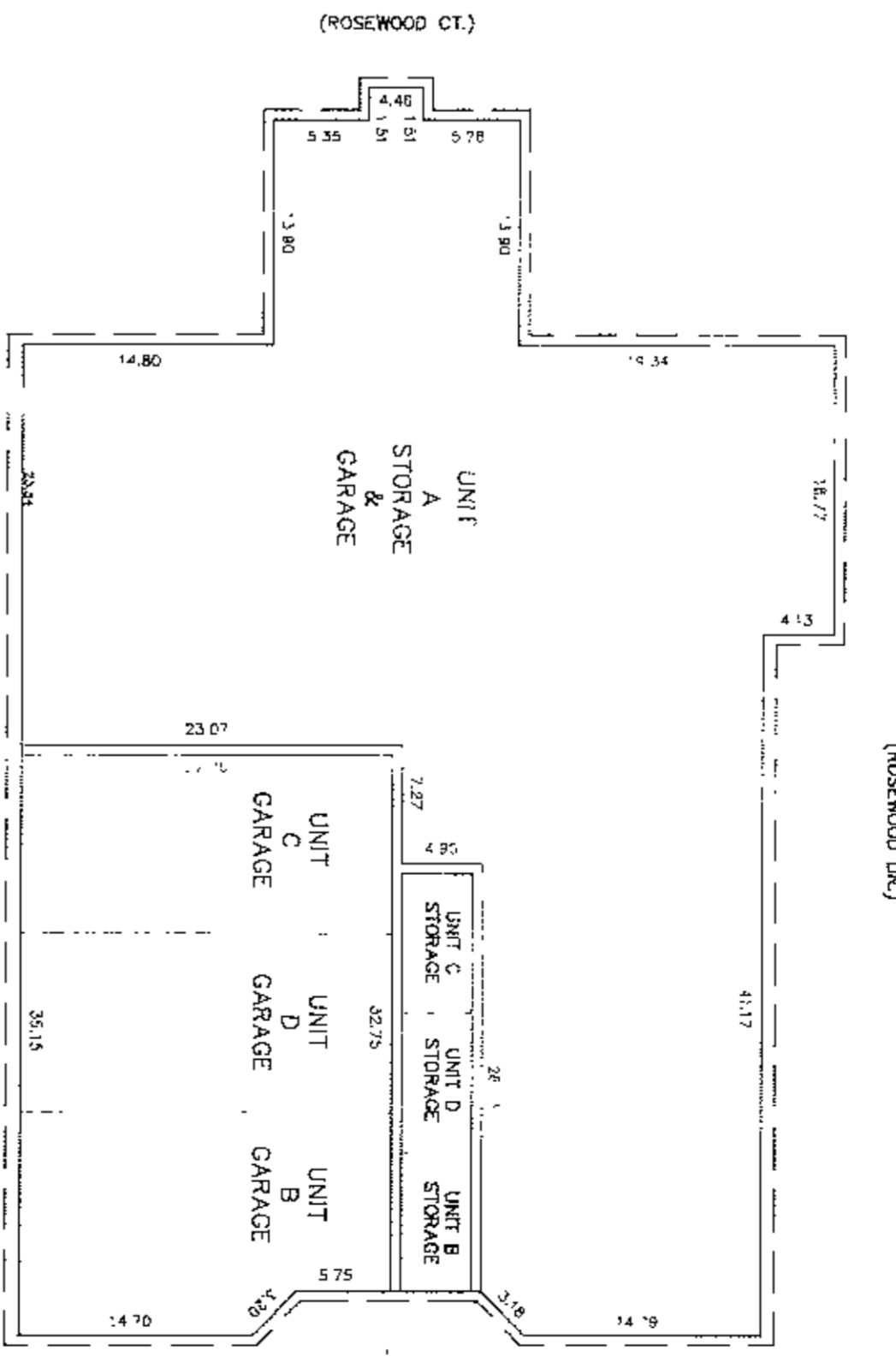
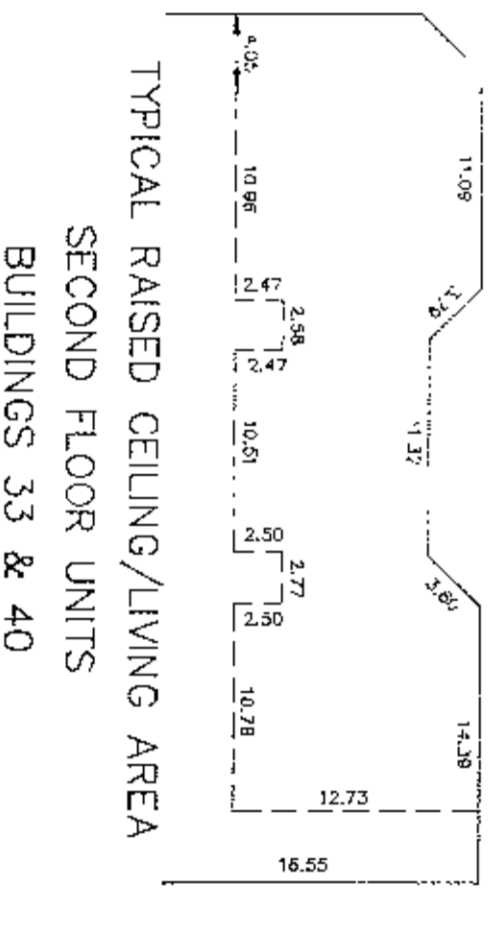
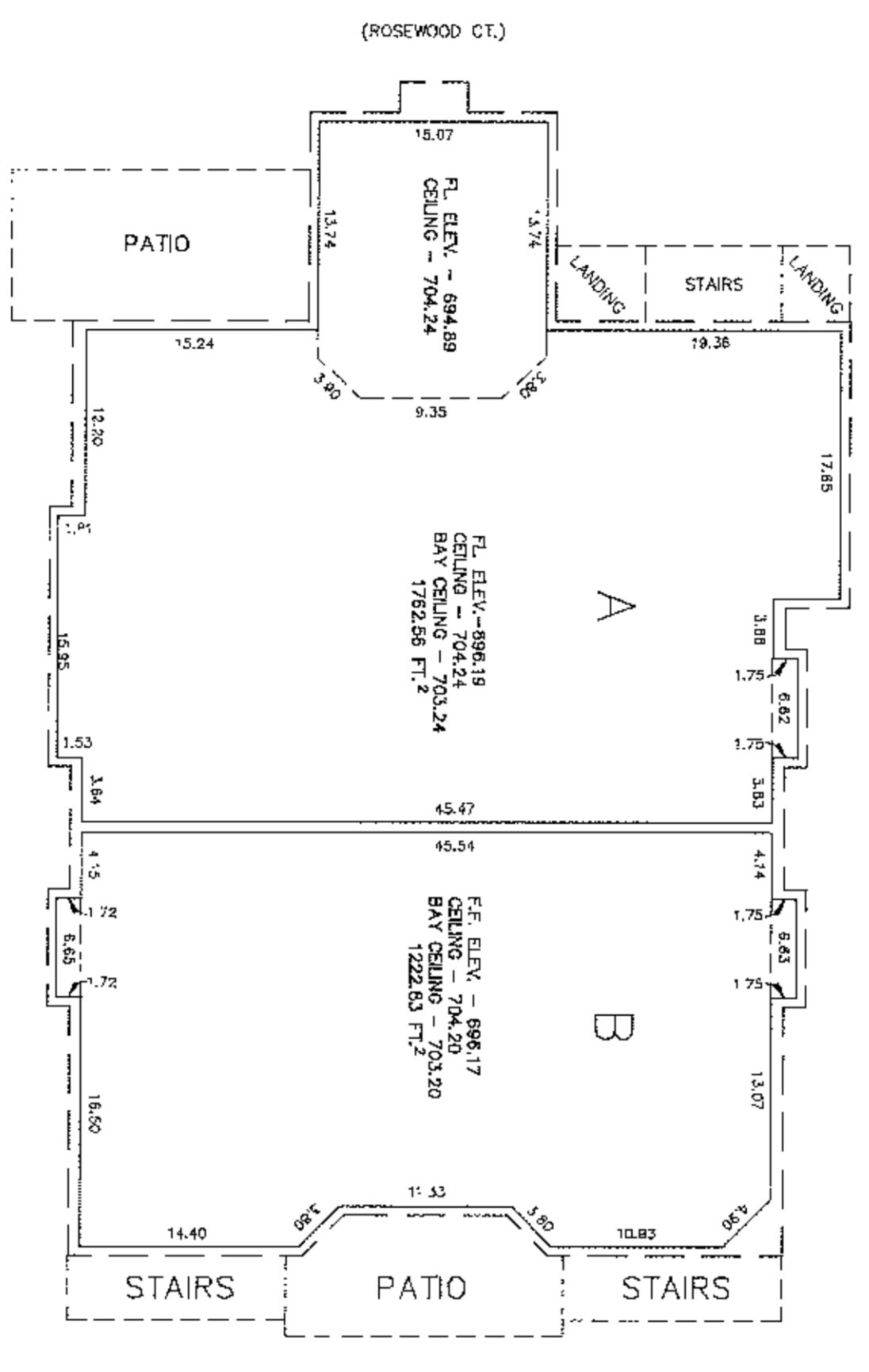
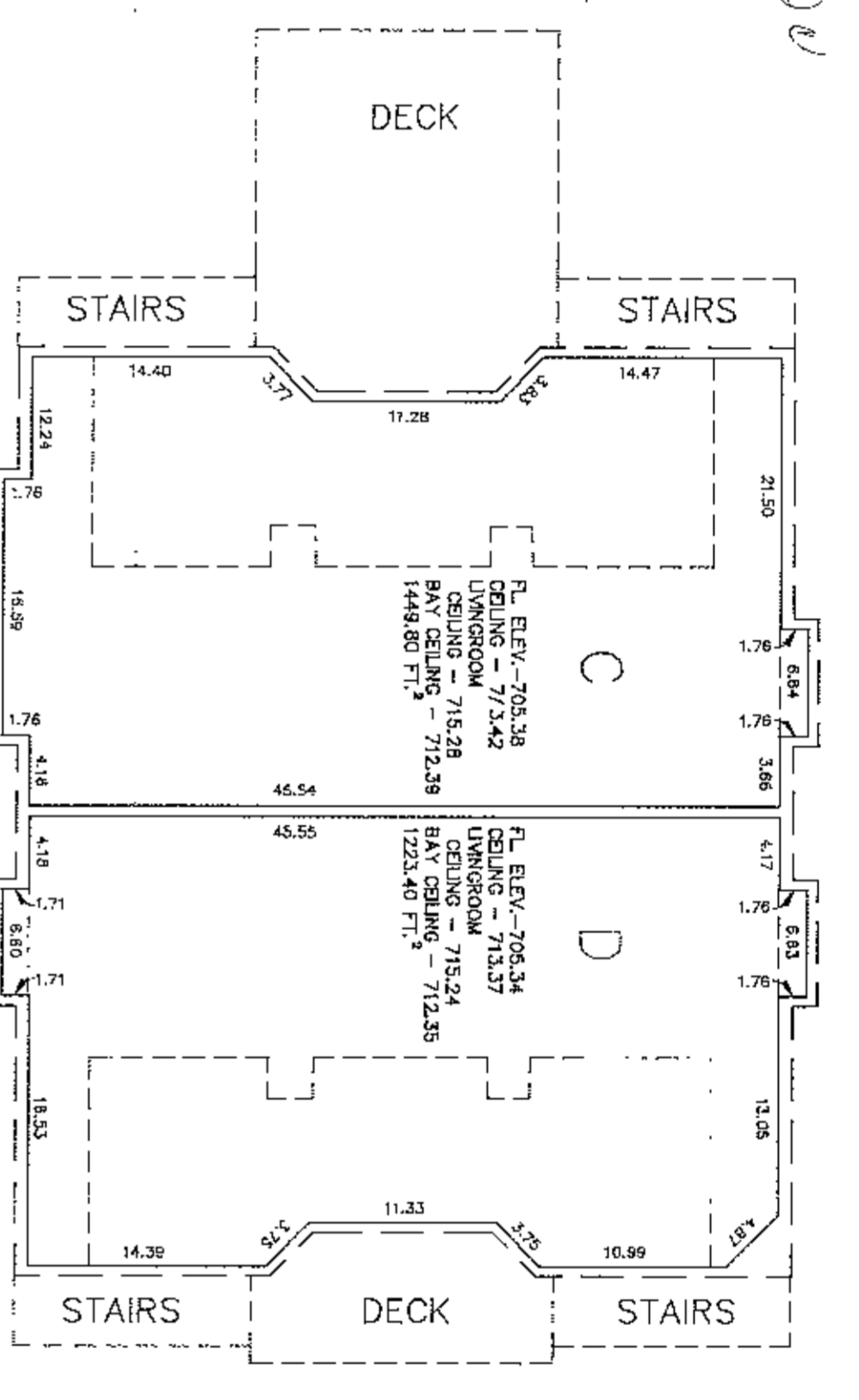
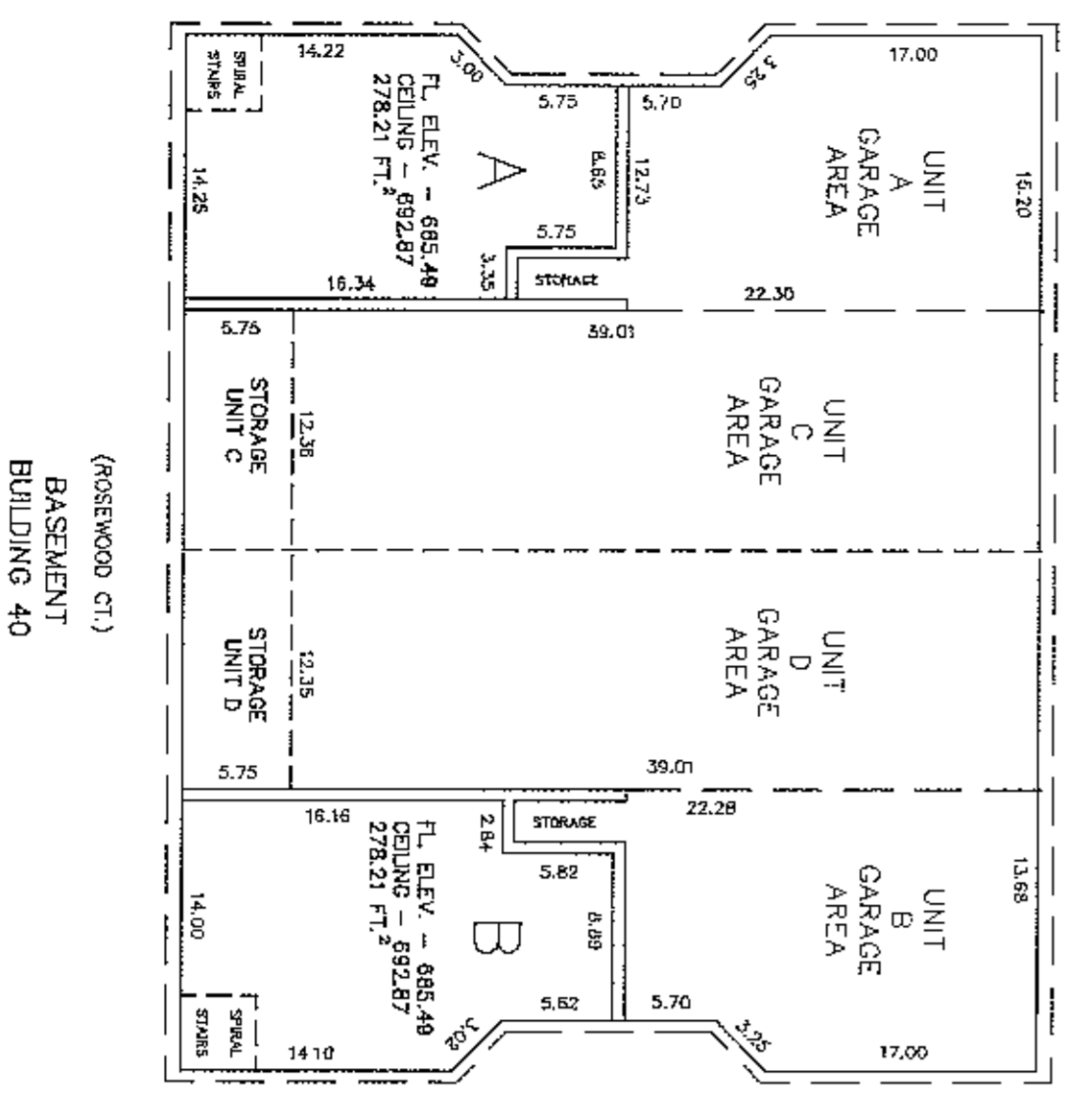
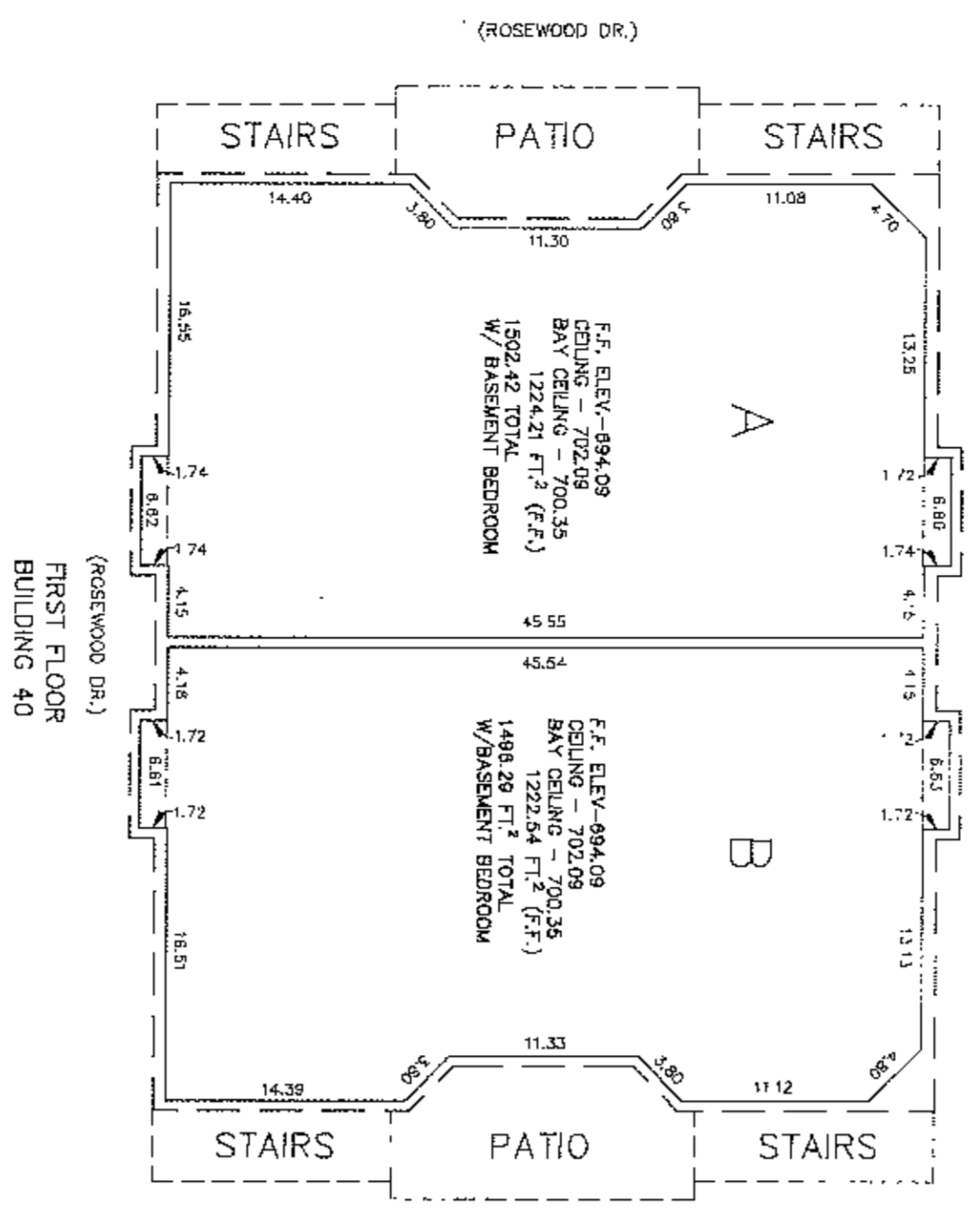
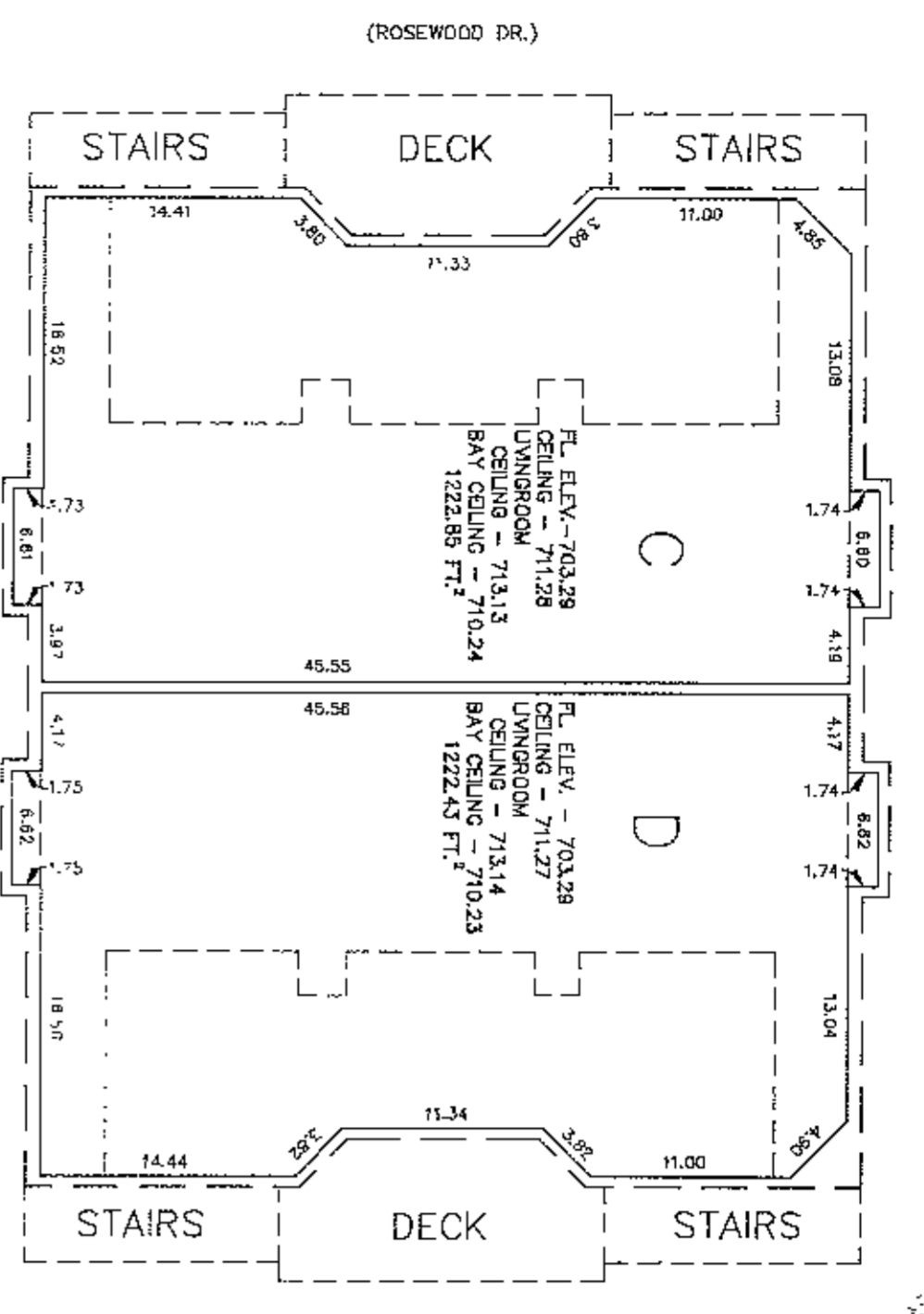
Sheet 3 of 5

40X14

1/30/88

DATE: 1/30/88  
BY: JLG

REVISIONS:  
1. DECK  
2. STAIRS



LEGEND  
 UNIT BOUNDARY  
 LIMITED COMMON ELEMENT  
 GENERAL COMMON ELEMENT

PROJECT NO.: 8720

REVISIONS:

DRWN BY: JLG  
 CHKD BY: JLG

EVANS/GRIFFIN, INC.  
 4898 Brownsboro Center  
 Louisville, Kentucky 40207  
 (502) 895-0682 (502) 895-0683

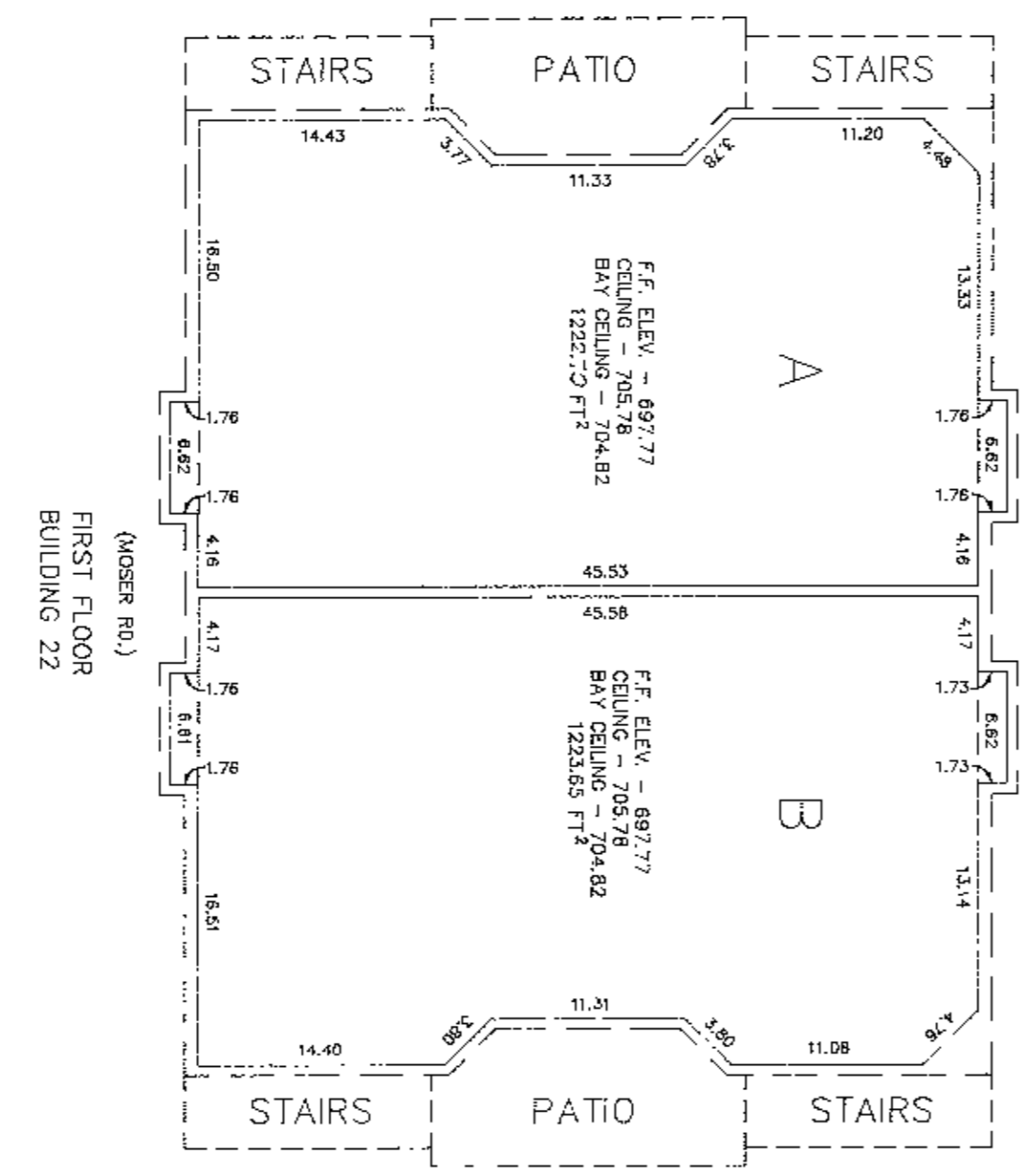
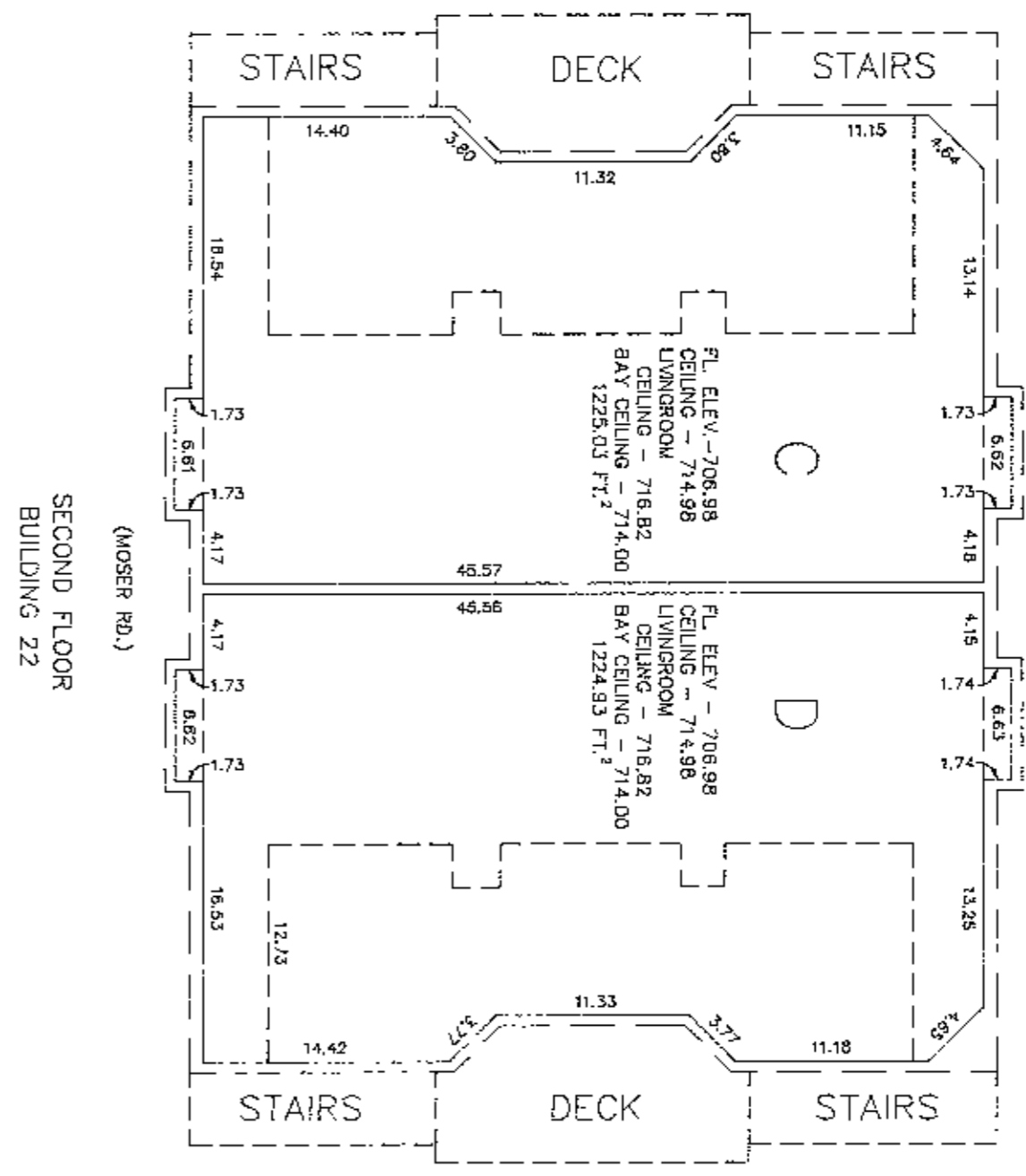
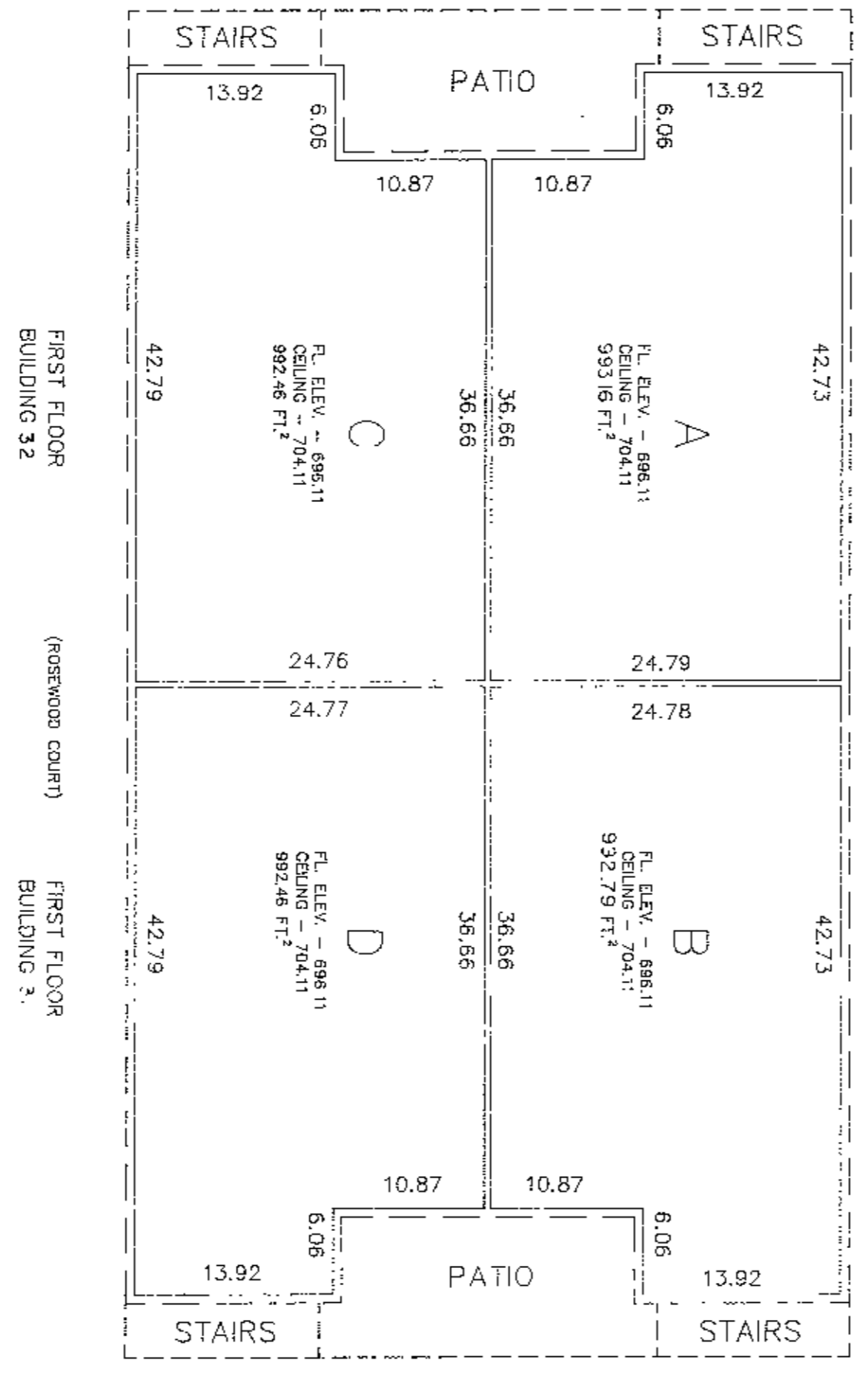
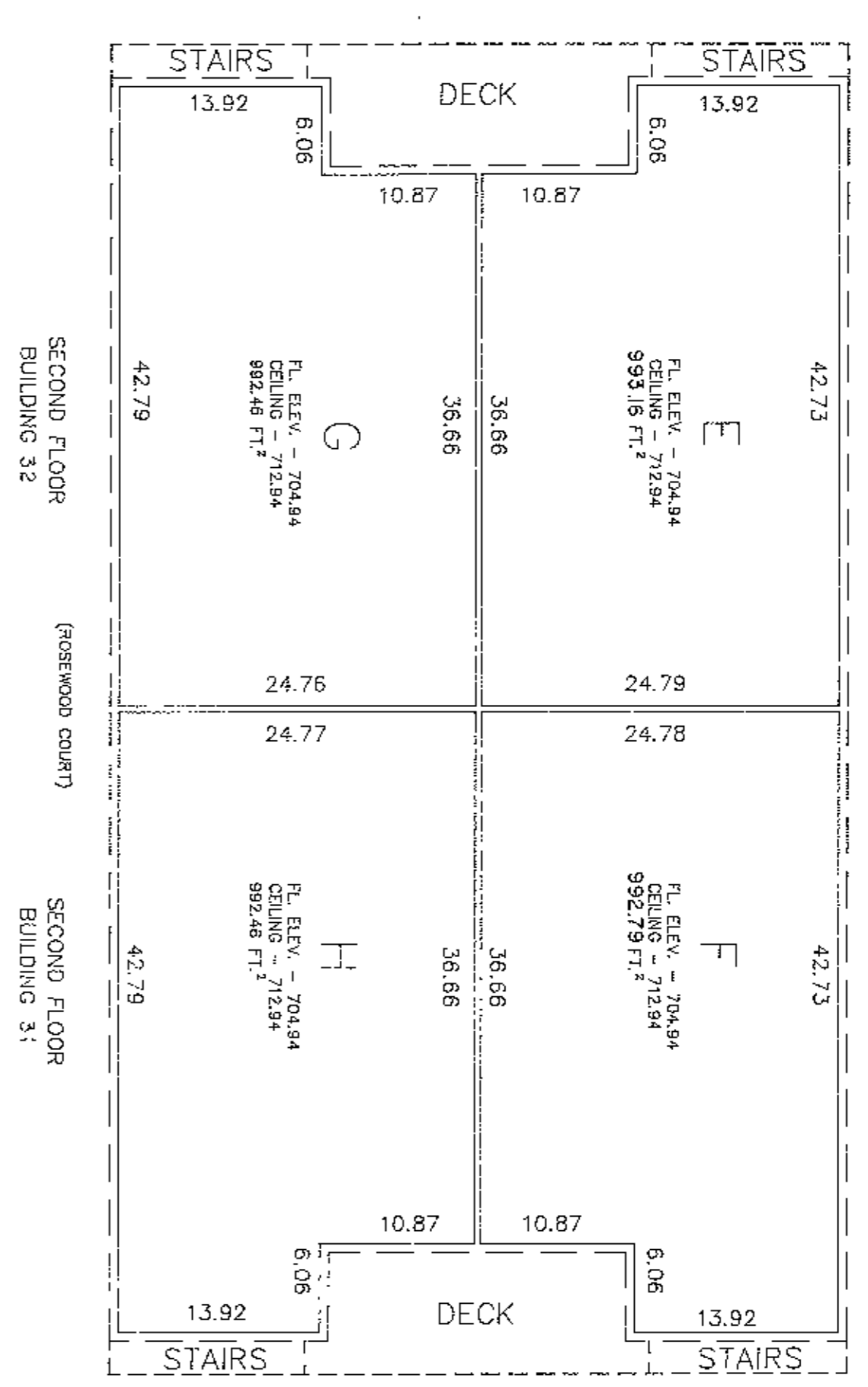
SHELBY POINTE  
 CONDOMINIUM  
 HOMES

SCALE: 1"=10'  
 DATE: 5/22/87  
 Sheet 4 of 5

4/8/85

18251  
 4/11/87  
 10  
 5/30/87

30 APR 14 09 28 19  
 5755, 456  
 5/30/87

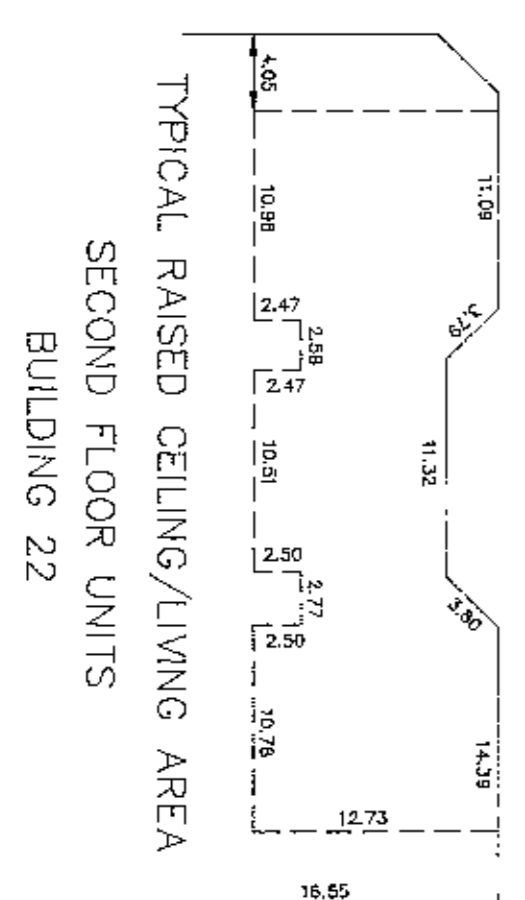


LEGEND

UNIT BOUNDARY

LIMITED COMMON ELEMENT

GENERAL COMMON ELEMENT



PROJECT NO.: 8720	REVISIONS: 7/28/87 Add BLDG 31/32
	8/01/87 CK BLDG 31/32
DRAWN BY: <i>MDP</i> CHECK BY: <i>JLG</i>	EVANS/GRIFFIN, INC. 4898 Brownsboro Center Louisville, Kentucky 40207 (502) 895-0662
SHEET NO.: 40X/16	SHELBY POINTE CONDOMINIUM HOMES
SCALE: 1" = 10' DATE: 5/27/87	SHEET NO.: 5 of 5